

# Amicon® Ultra-0.5 Filter

Sample concentration so efficient, one drop will be enough to obtain all your downstream results



## Your Challenge

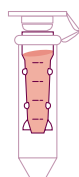
Maximize the consistent recovery of small volumes and minimize user impact during sample recovery.

## Our Solution

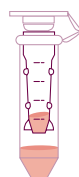
After concentrating your small volume sample in the Amicon Ultra-0.5 filter, turn the unit upside down and spin out your sample for consistent recovery without pipetting errors.

Give yourself a head start in the race to validate and publish your results by choosing Amicon Ultra-0.5 filters to concentrate your valuable protein. When the quality of downstream results matter, make sure you start with the best centrifugal filter.

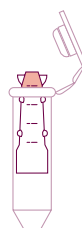
- Concentrate 500  $\mu$ L down to 15  $\mu$ L
- Low-binding membrane delivers > 90% recoveries
- Engineered dead stop avoids spinning your sample to dryness
- Achieve concentration, desalting or buffer exchanges in as little as 10 minutes
- Reverse spin capability eliminates pipetting errors and maximizes recovery



Fill



Spin



Recover



Collect

# Fast protein concentration without compromising recovery

Percent recovery and final retentate volume of the Amicon Ultra-0.5 filter, the Microcon® filter, and three competitors' centrifugal filters (10,000 MWCO) were evaluated. Multiple units of each type were filled with cytochrome c solution and spun according to the manufacturer's instructions.

## ORDERING INFORMATION

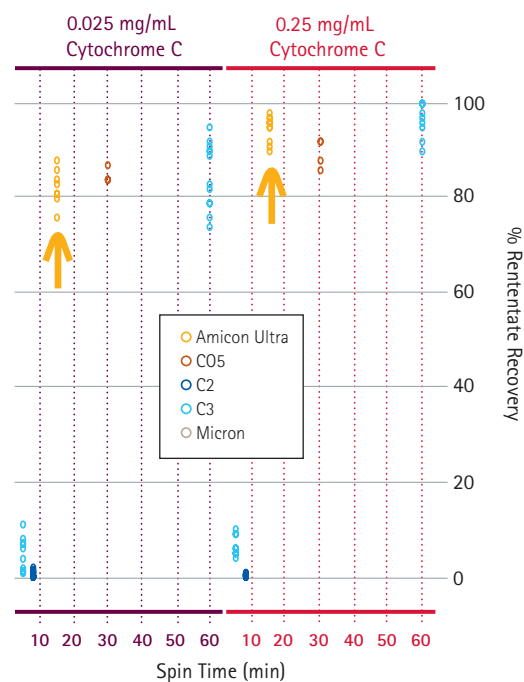
### Amicon Ultra Centrifugal Filters

	Product	Amicon Ultra-5.0
	Maximum initial sample volume (mL)	0.5
	Final concentrate (retentate) volume (µL)	15 - 20
3,000 MWCO	24/pk	UFC500324
	96/pk	UFC500396
10,000 MWCO	24/pk	UFC500324
	96/pk	UFC501096

## ALSO AVAILABLE

### The Amicon Ultra-4 and Amicon Ultra-15 filter units

Speed up the concentration of large volumes while achieving high (75- to 80-fold) concentration factors with the vertical membrane inside Amicon Ultra-4 and Amicon Ultra-15 filter units. You minimize concentration polarization for ultra-fast spin times – usually in 10 minutes.



Compared to competitors' centrifugal filters, only the Amicon Ultra-0.5 filter and the classic Microcon filter were able to consistently concentrate the cytochrome c sample by 10-20 fold with excellent recovery (80-100%), even with a dilute (0.025 mg/mL) solution. The Amicon Ultra-0.5 filter allows equal to or better sample concentration than the Microcon filter, but works in half the spin time.



For technical assistance, contact Millipore:  
 1-800-MILLIPORE (1-800-645-5476)  
 E-mail: [tech\\_service@millipore.com](mailto:tech_service@millipore.com)  
[www.emdmillipore.com](http://www.emdmillipore.com)



In the United States:  
 For customer service, call 1-800-766-7000.  
 To fax an order, use 1-800-926-1166.  
 To order online: [www.fishersci.com](http://www.fishersci.com)

In Canada:  
 For customer service, call 1-800-234-7437.  
 To fax an order, use 1-800-463-2996.  
 To order online: [www.fishersci.ca](http://www.fishersci.ca)