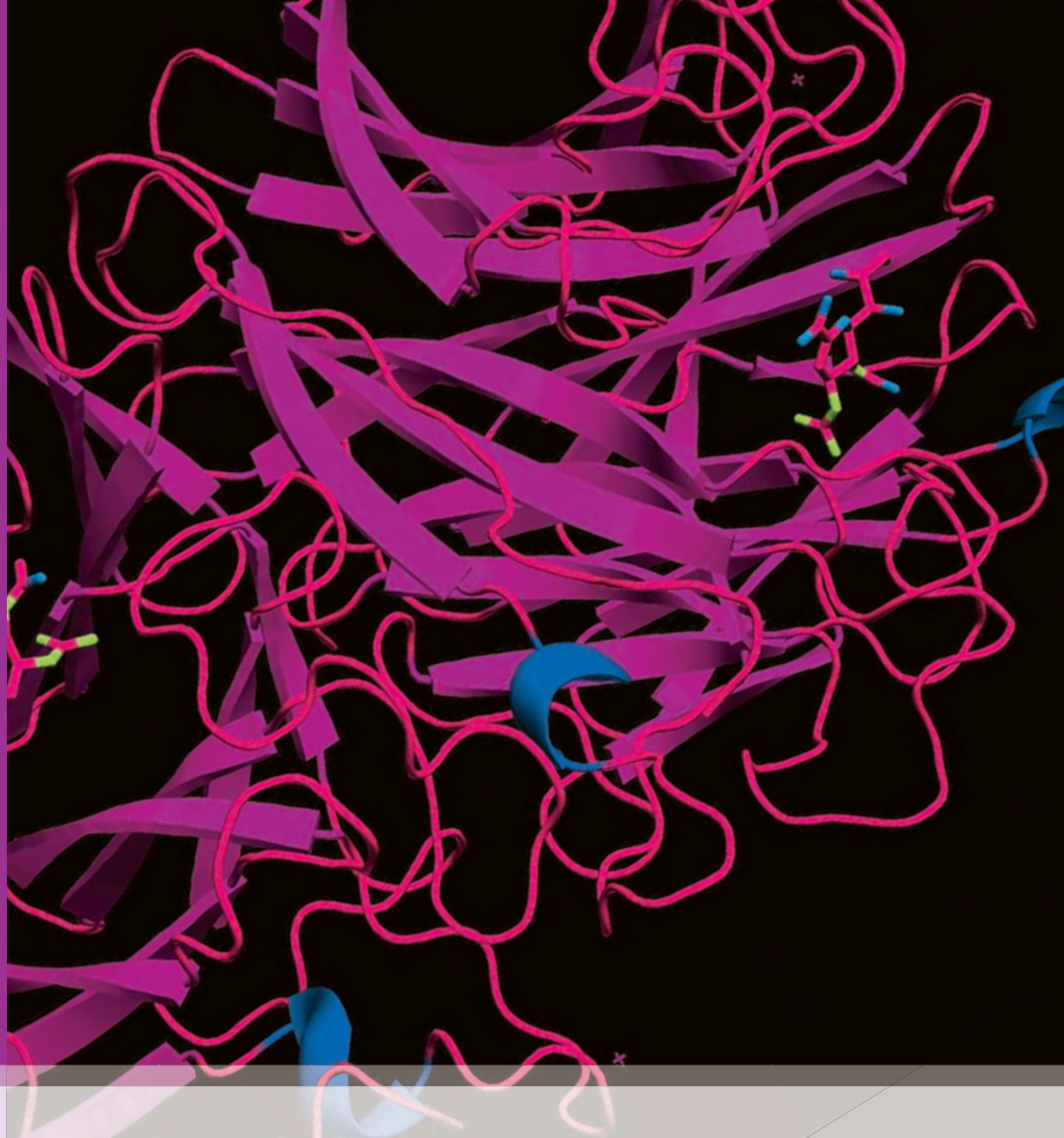


EZ-Run Protein  
Gel Solution

EZ-Run Protein  
Standards

EZ-Run Gel  
Staining Solution

Traditional SDS-PAGE  
Reagents

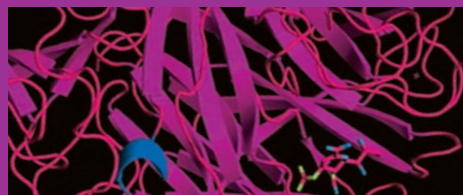


## Protein Electrophoresis



Fisher BioReagents®

# PROTEIN ELECTROPHORESIS



## Introduction

Sodium dodecyl sulfate – polyacrylamide gel electrophoresis (SDS-PAGE) is the most direct method for assessing in a fast and reproducible manner, the relative molecular weight ( $M_r$ ) of denatured polypeptide chains and the purity of a protein preparation. In SDS-PAGE, the sample to be applied to the gel is first treated with the anionic detergent SDS which denatures the proteins in the sample and binds tightly to the protein molecules. The SDS molecules confer a relatively uniform negative charge to the polypeptide in proportion to its length. When an electric current is applied across the gel, all proteins will migrate through the gel matrix toward the anode. In this way, SDS-PAGE separates proteins according to size because the SDS-coated proteins have a uniform charge:mass ratio. Proteins with less mass travel more quickly through the gel than those with larger mass because of the sieving effect of the gel matrix.

Shapiro et al. <i>Biochem. Biophys. Res.</i> 28, 815.	Laemmli. <i>Nature.</i> 277, 680.	Lambin. <i>Anal. Biochem.</i> 85, 114.	Schagger & von Jagow. <i>Anal. Biochem.</i> 166, 368.	Thermo Fisher Scientific.
<b>1967</b> SDS-PAGE for separating proteins according to molecular weight	<b>1970</b> Discontinuous SDS-PAGE for greater resolution than continuous gel system	<b>1978</b> Gradient Gels for wider separation range	<b>1987</b> Tricine-SDS-PAGE for separating small proteins	<b>2009</b> EZ-Run™ Protein Gel for a high resolution continuous gel system

The SDS-PAGE technique has been refined over the years (Table 1). For example, specialized gel systems such as porosity gradient gels and Tricine-SDS-PAGE were developed to expand the  $M_r$  analysis range and to improve the resolution of small proteins, respectively. Many would agree that improvements to the technique have reached a plateau and standard protocols have been adopted in most laboratories around the world.

However, Fisher BioReagents **EZ-Run Protein Gel Solution** is used as a simple, continuous gel system for SDS-PAGE that provides the resolution of a gradient gel with less preparative work than the Laemmli discontinuous gel system (Table 1). It is a premixed solution of acrylamide, bis-acrylamide, buffer, and SDS that eliminates the need of a stacking gel. The gradient-like properties of the EZ-Run gel matrix slow the migration of proteins through the electrophoretic field, enabling the resolution of small peptides and large proteins on the same gel.

## EZ-Run™ Protein Gel Solution

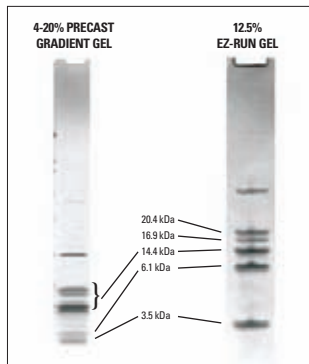
- Ready to use
- Superior resolution
- Wide separation range on same mini-gel
- No stacking gel required
- Proprietary gel chemistry
- Stable for two years at room temperature
- Compatible with all conventional staining methods
- Suitable for post-electrophoresis applications such as Western blot transfer and MALDI analysis

EZ-Run Protein Gel Solution is a unique ready-to-pour premixed solution of acrylamide, buffer, and SDS that enables superior resolution of protein bands by SDS-PAGE. The liquid blend requires only the addition of ammonium persulfate and TEMED to prepare

a quality gel matrix for SDS-PAGE. The proprietary gel chemistry imparts gradient-like properties to the polymerized gel matrix, enabling the separation of small peptides and high molecular weight proteins on the same mini-gel.

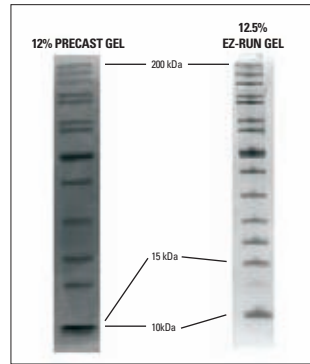
EZ-Run gel matrix is used as a simple, continuous gel system and does not require a stacking gel, which saves labor and time in casting the gel. EZ-Run gel separates small proteins like Tricine-SDS-PAGE and has a wide separation range similar to gradient gels (3 to 200kDa on the same mini-gel).

EZ-Run gels are compatible with all standard electrophoresis equipment as well as common staining methods such as Coomassie blue, silver stain, and fluorescent dyes. Post-electrophoresis techniques such as Western blot transfer, protein sequencing, and MALDI analysis can also be applied to proteins separated on EZ-Run gels.



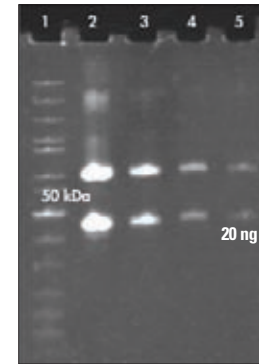
### Resolution equal to or better than gradient precast gels!

EZ-Run Protein Gel Solution provides superior separation of closely spaced, small proteins (<20kDa) compared to a commercial gradient precast gel.



### Separate wide range of protein sizes (3–200kDa) on the same minigel

The EZ-Run continuous gel system enables separation of small peptides and high MW proteins on the same minigel. For example, a commercial 12% precast discontinuous gel is not capable of resolving the 10 and 15kDa proteins compared to the 12% EZ-Run gel.



### EZ-Run gel matrix compatible with common gel staining methods such as fluorescent dyes

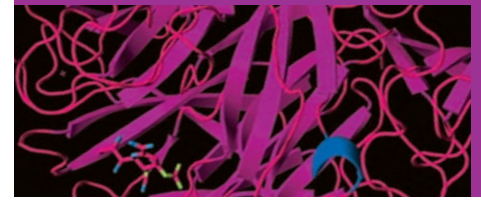
Serial dilution of BSA (66kDa) and Ovalbumin (45kDa) are loaded in lanes 2 to 5 of an EZ-Run gel and detected with SYPRO® Ruby fluorescent protein stain. Protein standard in lane 1 is BP3602 EZ-Run Rec Protein Ladder.

#### EZ-Run Protein Gel Solution Separation Range:

EZ-Run Gel %	MW Separation Range (kDa)
10	10–220
12.5	3–200
15	2–100

#### EZ-Run Protein Gel Solution Ordering Information:

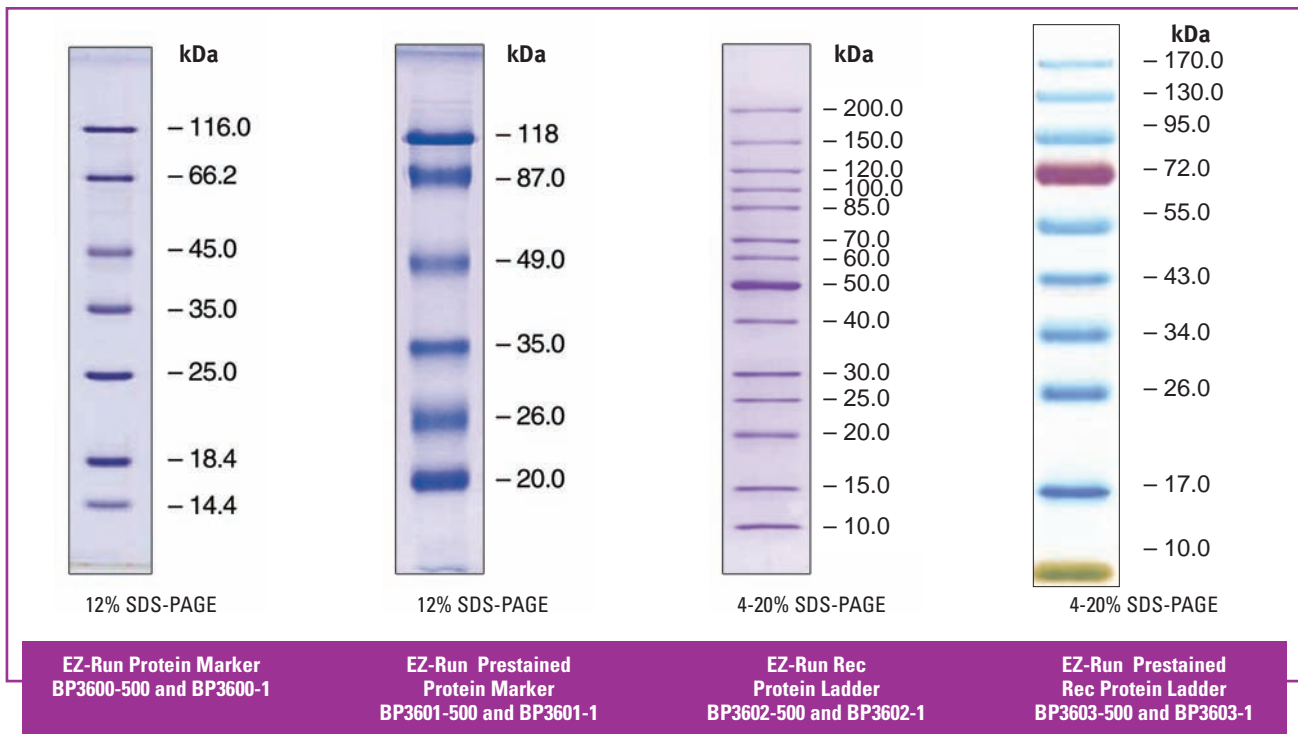
Description	Size	Catalog No.
10% EZ-Run Protein Gel Solution with buffer	100mL	<b>BP7710-100</b>
10% EZ-Run Protein Gel Solution with buffer	500mL	<b>BP7710-500</b>
12.5% EZ-Run Protein Gel Solution with buffer	100mL	<b>BP7712-100</b>
12.5% EZ-Run Protein Gel Solution with buffer	500mL	<b>BP7712-500</b>
15% EZ-Run Protein Gel Solution with buffer	100mL	<b>BP7715-100</b>
15% EZ-Run Protein Gel Solution with buffer	500mL	<b>BP7715-500</b>
20x Running Buffer for EZ-Run Protein Gel Solution	500mL	<b>BP7700-500</b>



## EZ-Run Protein Standards

Designed to assist in characterizing unknown proteins in polyacrylamide gels and immunoblots

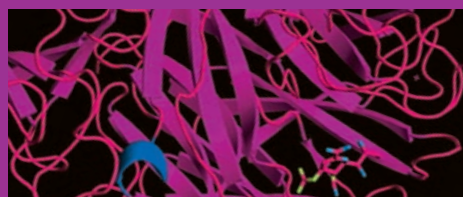
- Highly purified markers and ladders provide compact and clear bands
- Prestained standards are indispensable in monitoring protein separation and transfer efficiency
- Reference bands allow quick gel progress assessment
- Unstained standards are most suitable for precise sizing of proteins
- All standards are supplied in loading buffer and are ready to use



Ordering Information						
Description	MW Range	No. of Bands	Reference Band	Source	Quantity	Catalog No.
Unstained Protein Standards	14.4-116.0kDa	7	----	Native proteins	500µL	<b>BP3600-500</b>
					2 x 500µL	<b>BP3600-1</b>
	10.0-200.0kDa	14	50kDa	Recombinant proteins	500µL	<b>BP3602-500</b>
					2 x 500µL	<b>BP3602-1</b>
Prestained Protein Standards	20.0-118.0kDa	6	----	Native proteins	500µL	<b>BP3601-500</b>
					2 x 500µL	<b>BP3601-1</b>
	11.0-170.0kDa	10	72kDa	Recombinant proteins	500µL	<b>BP3603-500</b>
					2 x 500µL	<b>BP3603-1</b>



# PROTEIN ELECTROPHORESIS



## EZ-Run Protein Gel Staining Solution

### Highly sensitive, nontoxic

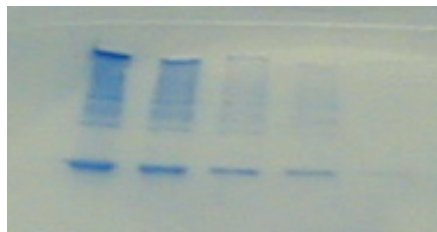
- Detects as little as 5ng protein
- Produces minimal or no background
- Permits rapid staining/destaining (30 minute staining and one hour destaining in water is sufficient for most applications)
- Contains Coomassie Brilliant Blue G-250
- Does not contain methanol or acetic acid
- Ready to use

### Ordering Information

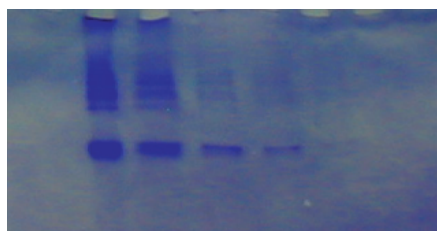
Quantity	Catalog No.
1L	BP3620-1
4L	BP3620-4

One liter of EZ-Run Protein Gel Staining Solution is sufficient for 50 minigels.

## EZ-Run Protein Gel Staining Solution



### Conventional Coomassie Blue Staining



### Destaining of EZ-Run Protein Gel Staining Solution

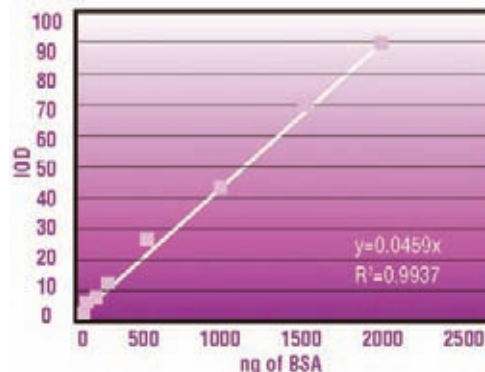
Compared to conventional Coomassie Blue staining, the EZ-Run stain produces very clean backgrounds using only water for destaining.

## Staining sensitivity with EZ-Run Protein Gel Staining Solution



Serial dilution of BSA on 10% SDS-PAGE demonstrating staining sensitivity of EZ-Run Protein Gel Staining Solution.

## Linear range of protein detection using BP3620 EZ-Run Protein Gel Staining Solution



Band intensity was measured and plotted against the amount of protein (BSA) loaded per gel lane. The result shows a linear dynamic range from 5ng to 2000ng using EZ-Run Protein Gel Staining Solution.

## Additional Protein Electrophoresis Reagents from Fisher BioReagents

### Buffers for Protein Electrophoresis

Description	Quantity	Catalog No.
Protein Gel-loading dye for SDS-PAGE		
2x	1mL	BP637-1
2x	5mL	BP637-5
TG Tris-Glycine		
10X	1L	BP1306-1
10X	4L	BP1306-4
10X	1L*	BP1307-1
TGS Tris-Glycine-SDS		
10X	1L	BP1341-1
10X	4L	BP1341-4
5X	1L*	BP1398-92
10X	1L*	BP1342-1
SDS Sodium Dodecyl Sulfate		
10%	200mL	BP2436-200
10%	1L	BP2436-1
20%	200mL	BP1311-200
20%	1L	BP1311-1
PBS Phosphate Buffered Saline		
10X	500mL	BP399-500
10X	1L	BP399-1
10X	4L	BP399-4
10X	20L	BP399-20
TBS Tris-Buffered Saline		
10X(7.4)	100mL	BP2471-100
10X(7.4)	500mL	BP2471-500
10X(7.4)	1L	BP2471-1

\*Pre-weighed powder to make 1L. Dissolve in water.

### Detergents/Denaturing Agents

Description	Quantity	Catalog No.
BRIJ 35	500g	BP345500
CHAPS	1g	BP5711
	5g	BP5715
CHAPSO	500mg	BP575500
SDS	100g	BP166100
	500g	BP166500
	5kg	BP1665
SDS 10% SOLUTION	200mL	BP2436200
	1L	BP24361
SDS 20% SOLUTION	200mL	BP1311200
	1L	BP13111
TRITON X-100	100mL	BP151100
	500mL	BP151500
TWEEN 20	100mL	BP337100
	500mL	BP337500
TWEEN 80	500mL	BP338500
N-OCTYL-B-D-GLUCOPYRANOSIDE	500mg	BP585500
	1g	BP5851
	5g	BP5855
	25g	BP58525

## Additional Protein Electrophoresis Reagents from Fisher BioReagents

### Acrylamide, Bis-Acrylamide, and Catalysts

Description	Quantity	Catalog No.
Acrylamide	100g	BP170-100
	500g	BP170-500
	5kg	BP170-5
Acrylamide Solution, 40%	1L	BP1402-1
Bis-Acrylamide	25g	BP171-25
	100g	BP171-100
Bis-Acrylamide Solution, 2%	250mL	BP1404-250
Acrylamide:Bis-Acrylamide, Dry Powder Mix, 19:1 (5% Cross-linker)	100g	BP1364-100
Acrylamide:Bis-Acrylamide, Dry Powder Mix, 29:1 (3.3% Cross-linker)	100g	BP1366-100
Acrylamide:Bis-Acrylamide, Dry Powder Mix, 37.5:1 (2.6% Cross-linker)	100g	BP1368-100
Acrylamide:Bis-Acrylamide, 40% Solution, 19:1 (5% Cross-linker)	1L	BP1406-1
Acrylamide:Bis-Acrylamide, 40% Solution, 29:1 (3.3% Cross-linker)	1L	BP1408-1
Acrylamide:Bis-Acrylamide, 40% Solution, 37.5:1 (2.6% Cross-linker)	1L	BP1410-1
Ammonium Persulfate	25g	BP179-25
	100g	BP179-100
Sodium Persulfate	1kg	BP2637-1 TEMED
	130mL (100g)	BP150-100
TEMED	26mL (20g)	BP150-20

### Protease Inhibitors

Description	Quantity	Catalog No.
4-(2-AMINOETHYL) BENZENESULFONYL FLUORIDE HCL	10mg	BP264410
	50mg	BP264450
	100mg	BP2644100
	500mg	BP2644500
	1g	BP26441
APROTININ	1mL	BP250310
	40mL	BP250340
BENZAMIDINE.HCL	25g	BP43525
	1kg	BP4351
LEUPEPTIN HEMISULFATE	1mg	BP26621
	5mg	BP26625
	25mg	BP266225
	100mg	BP2662100
PEPSTATIN A	5mg	BP26715
	10mg	BP267110
	25mg	BP267125
	100mg	BP2671100
	250mg	BP2671250

## Preparation of Polyacrylamide Stacking and Separating Gels (SDS-PAGE)

### Separating Gel (Total Volume, 15mL)<sup>1</sup>

Final % Acrylamide in Gel <sup>2</sup> Stock Solutions <sup>3</sup>	5	6	7	7.5	8	9	10	12	13	15
30% Acrylamide/0.8% Bis-Acrylamide	2.50mL	3.00mL	3.50mL	3.75mL	4.00mL	4.50mL	5.00mL	6.00mL	6.50mL	7.50mL
4X Tris•Cl, pH 8.8	3.75	3.75	3.75	3.75	3.75	3.75	3.75	3.75	3.75	3.75
H <sub>2</sub> O <sup>4</sup>	8.60	8.10	7.60	7.35	7.10	6.60	6.10	5.10	4.60	3.60
10% SDS	0.15	0.15	0.15	0.15	0.15	0.15	0.15	0.15	0.15	0.15
10% Ammonium Persulfate <sup>5</sup>	0.05	0.05	0.05	0.05	0.05	0.05	0.05	0.05	0.05	0.05
TEMED	0.01	0.01	0.01	0.01	0.01	0.01	0.01	0.01	0.01	0.01

### 4% Stacking Gel (Total Volume, 5mL)<sup>1</sup>

Stock Solution	Volume
30% Acrylamide/0.8% Bis-Acrylamide	0.65mL
4X Tris•Cl, pH 8.8	1.25mL
H <sub>2</sub> O <sup>4</sup>	3.00mL
10% SDS	50µL
10% Ammonium Persulfate <sup>5</sup>	25µL
TEMED	5µL

### Procedure for Gel Preparation

In a 25mL sidearm flask, mix the given volumes of Acrylamide/Bis-Acrylamide solution, Tris•HCl buffer, and H<sub>2</sub>O. Degas under vacuum 10 to 15 minutes. Add the SDS solution, Ammonium Persulfate solution, and TEMED. Swirl gently to mix. Use immediately.

<sup>1</sup> These volumes are adequate for a gel of dimensions 0.75cm x 14cm x 14cm. The recipes are based on the SDS (denaturing)-continuous buffer system of Laemmli (1970).

<sup>2</sup> The % acrylamide selected for the separating gel will depend on the molecular sizes of the proteins being separated.

<sup>3</sup> Recipes for the stock solutions appear earlier in this section.

<sup>4</sup> All reagents and solutions used in this protocol must be prepared with distilled deionized water.

<sup>5</sup> Store at 4°C (maximum 5 days).

©2009 Thermo Fisher Scientific Inc. All rights reserved. All trademarks are the property of Thermo Fisher Scientific Inc. and its subsidiaries. 09\_2086 JH/LY BN0408097



For customer service  
To fax an order  
To order online

Fisher Scientific US  
1-800-766-7000  
1-800-926-1166  
www.fishersci.com

Fisher HealthCare US  
1-800-640-0640  
1-800-290-0290  
www.fisherhealthcare.com

Fisher Scientific Global  
Export, Latin America  
1-770-871-4725  
1-770-871-4726  
www.fishersci.com

Fisher Scientific  
Canada  
1-800-234-7437  
1-800-463-2996  
www.fishersci.ca

